

cdc25A (7E11): va-5023

DESCRIPTION

M-phase inducer phosphatase 1; Dual specificity phosphatase Cdc25A

ANTIBODY TYPE

Mouse monoclonal antibody

ISOTYPE

IgG1

Gene Bank Accession

P48964

IMMUNOGEN

Recombinant mouse cdc25A protein

SPECIFIC REACTIVITY

Human, mouse, rat

SIZE

Each vial contains 100ug of IgG in 1ml PBS with 0.1% sodium azide and protein stabilizer

RECOMMENDED DILUTIONS

Western blot 1:100-1:5000

Immunohistochemistry 1:50-1:500

Immunoprecipitation 1:30-1:100

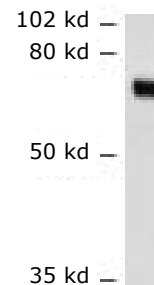
STORAGE

Store at +4° C. Do not freeze. Stable for one year from the date of shipment.

RESEARCH USE

For research use only, not for use in diagnostic procedures.

DATA



cdc25A (7E11): va-5023. Western blot analysis of cdc25A expression in BJAB cells

RELATED PRODUCTS

Blocking Reagent: va-99

Luminol Reagent: va-98

Western Blot Signal Enhancer: va-100

ELISA Signal Enhancer

TrueVision: va-301 (Immunological staining enhancer)

SmartBlot (IP/Western blot reagents)

siRNA cloning kit

siRNA products

mRNA detection kit

Chemokine products